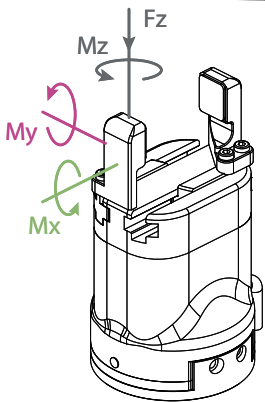


PGC-140

Collaborative parallel grippers

DH-ROBOTICS



Allowable vertical load (static)

Fz: 300 N

Allowable vertical load (static)

Mx: 7 N·m

My: 7 N·m

Mz: 7 N·m

Gripping force(per jaw)

40~140 N

Opening/closing stroke(both sides)

50 mm

Mechanical specifications

Maximum recommended load* 3 kg

Position repeatability (both sides) ± 0.03 mm

Opening/closing time 0.6 s/0.6 s

Driving method Rack and pinion + T-slot guidance

Weight 1 kg

Noise emission < 50 dB

Electrical specifications

Communication Standard: Modbus RTU (RS485), Digital I/O interface Optional: TCP/IP, USB2.0, CAN2.0A, PROFINET, EtherCAT

Nominal voltage 24 V DC ± 10%

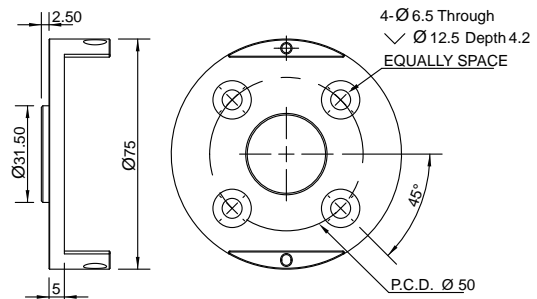
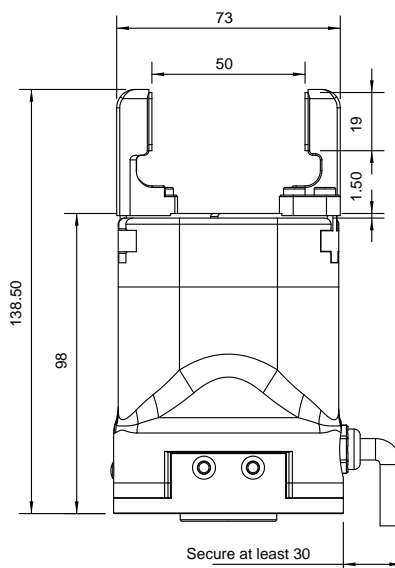
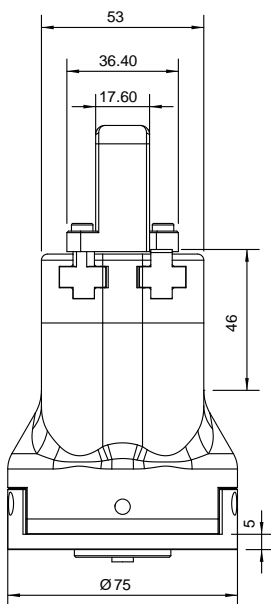
Nominal current 0.4 A

Peak current 1 A

Ingress protection rating IP 67

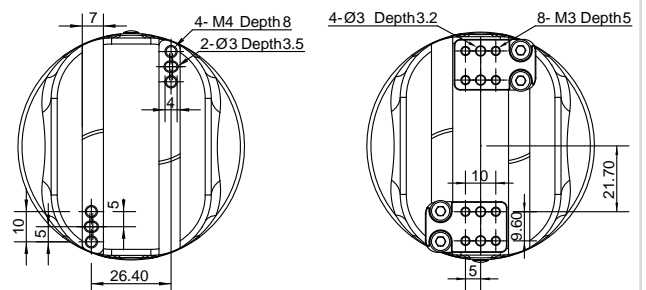
Recommended operating environment 0~40°C, 85% RH under environmen

*It depends on the shape of the grasping object, the material and friction of the contact surface, and the acceleration of the motion, if you have any questions, please consult us.



Conform to ISO 9409-1-50-4-M6 Standard flange

*If you need to customize the flange, it is recommended to design according to the robot installation hole position, or contact us



Rail mounting holes

Custom finger mounting size

*If you need to customize the finger, it is recommended to design according to the size of the finger mounting plate, or contact us